

Ateliér BV.

dynamika v kompozici rostlin

vedoucí: Ing. Karel Slánský



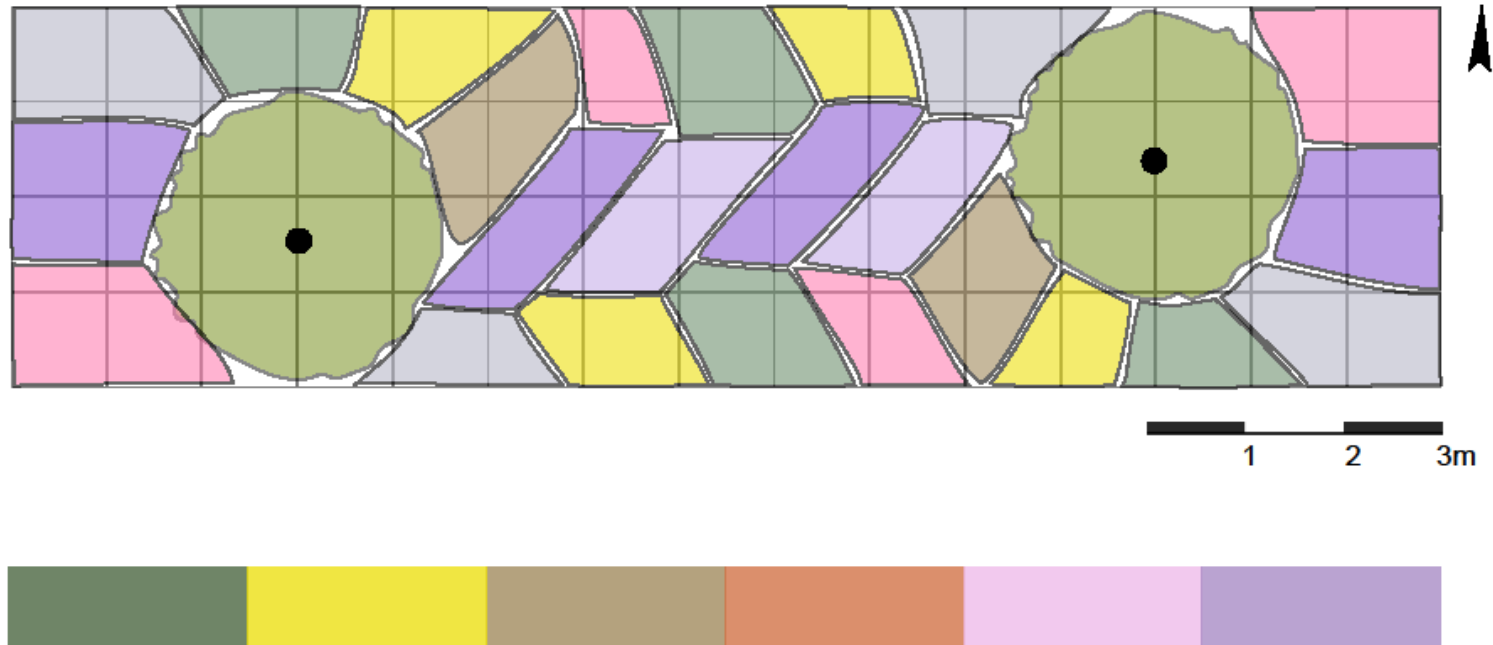
Veronika Vaníčková, ABAR 3.ročník
LS 2016

Česká zemědělská univerzita v Praze

Záhon I.

suché podmínky

Princip



Sortiment

Cornus sanguinea 'Winter beauty'



Perovskia atriplicifolia



Deschampsia flexuosa



Salvia nemorosa



Lavandula angustifolia



Koeleria glauca

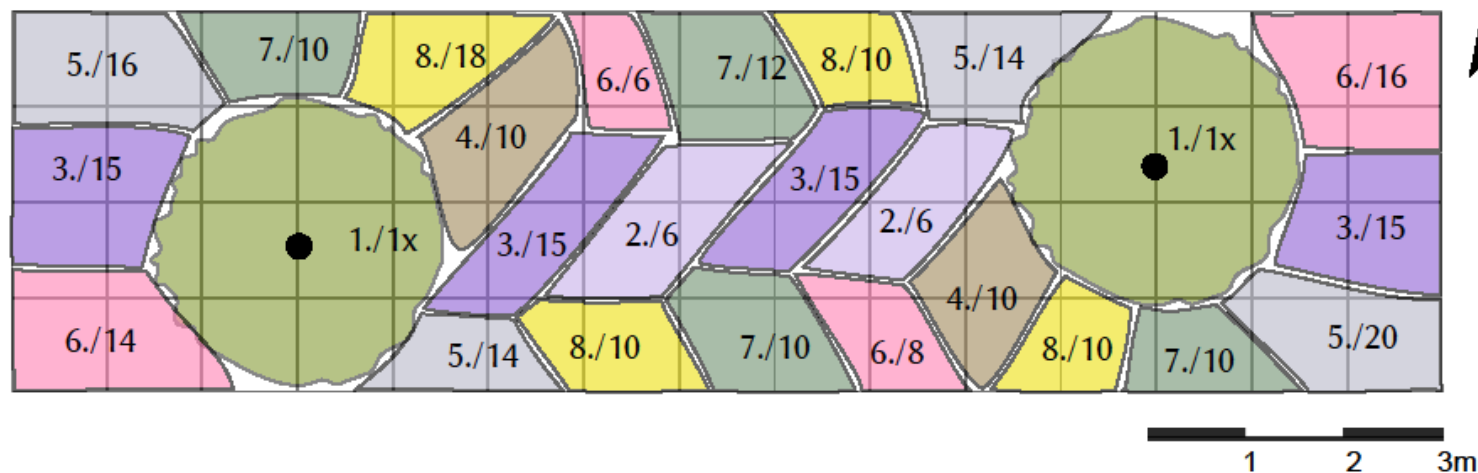


Euphorbia polychroma



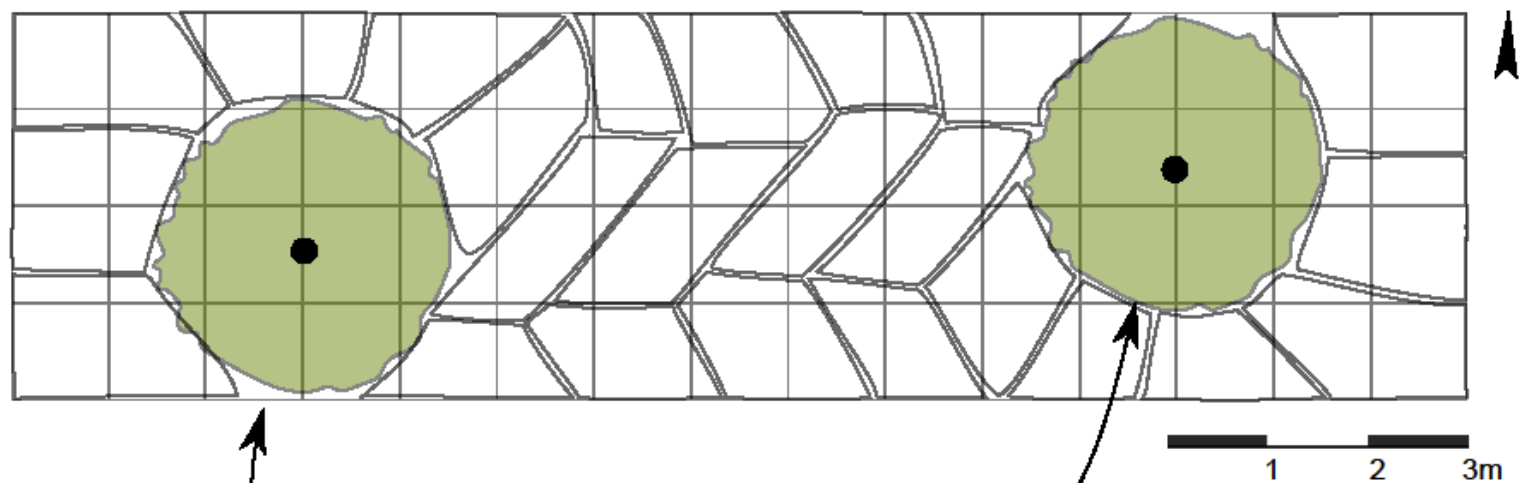
Echinacea purpurea

Osazovací plán



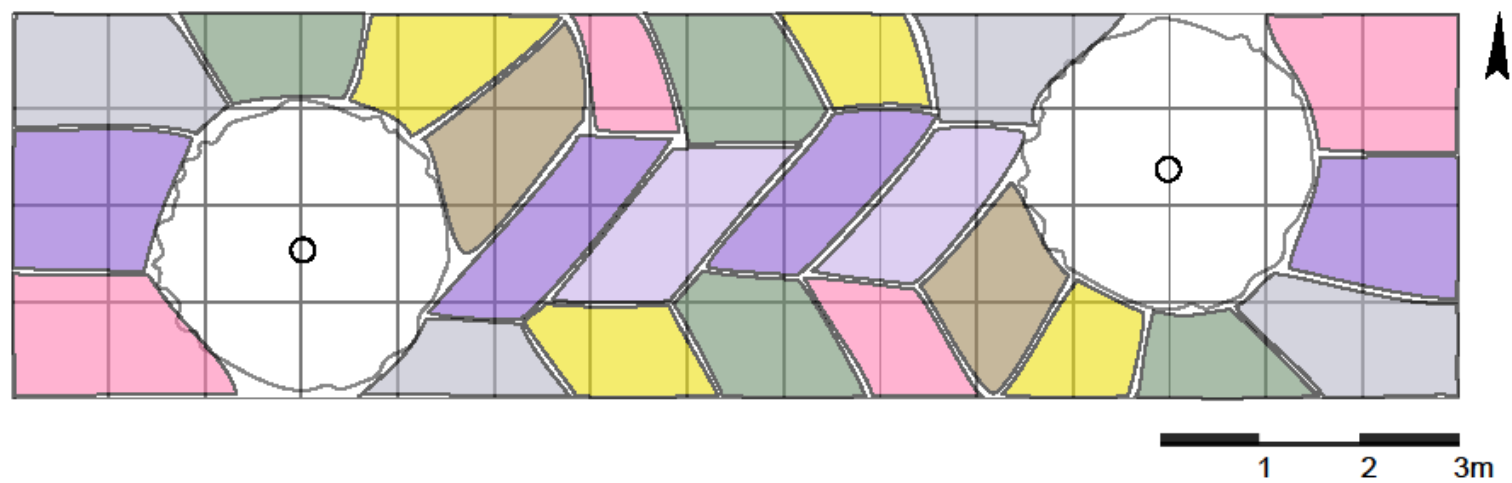
1. <i>Cornus sanguinea</i> 'Winter beauty'	2 -5m	2x
2. <i>Perovskia atriplicifolia</i>	0,8 - 1,5m	16x
3. <i>Salvia nemorosa</i>	0,6m	60x
4. <i>Deschampsia flexuosa</i>	0,6 - 0,7m	20x
5. <i>Lavandula angustifolia</i>	0,3 - 0,5m	64x
6. <i>Echinacea purpurea</i>	0,6 - 1m	80x
7. <i>Koeleria glauca</i>	0,3 - 0,7m	42x
8. <i>Euphorbia polychroma</i>	0,15 - 0,4m	48x

Keře



Cornus sanguinea 'Winter beauty'

Trvalky

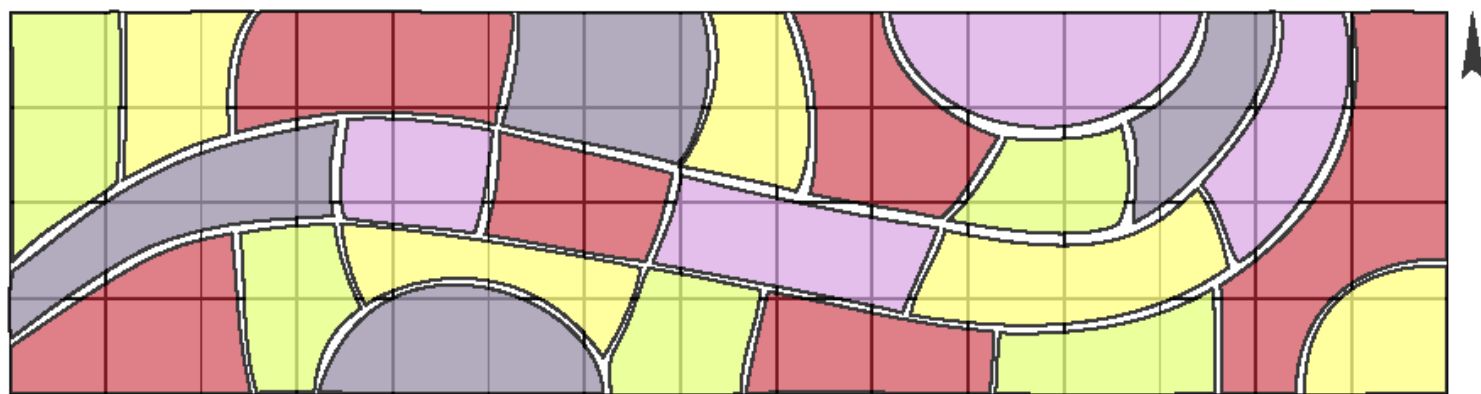




Záhon II.

extenzivní střešní zahrada
5 cm substrátu

Princip



Sortiment

Sedum acre



Sedum cauticola
'Lidakense'



Allium schoenoprasum

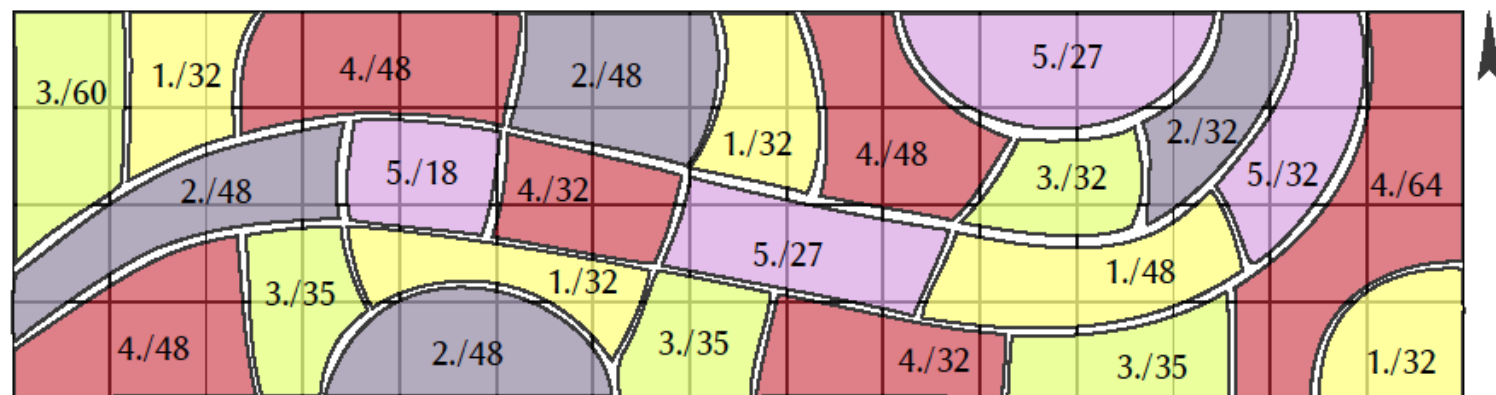


Sempervivum



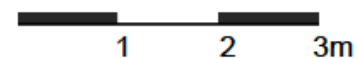
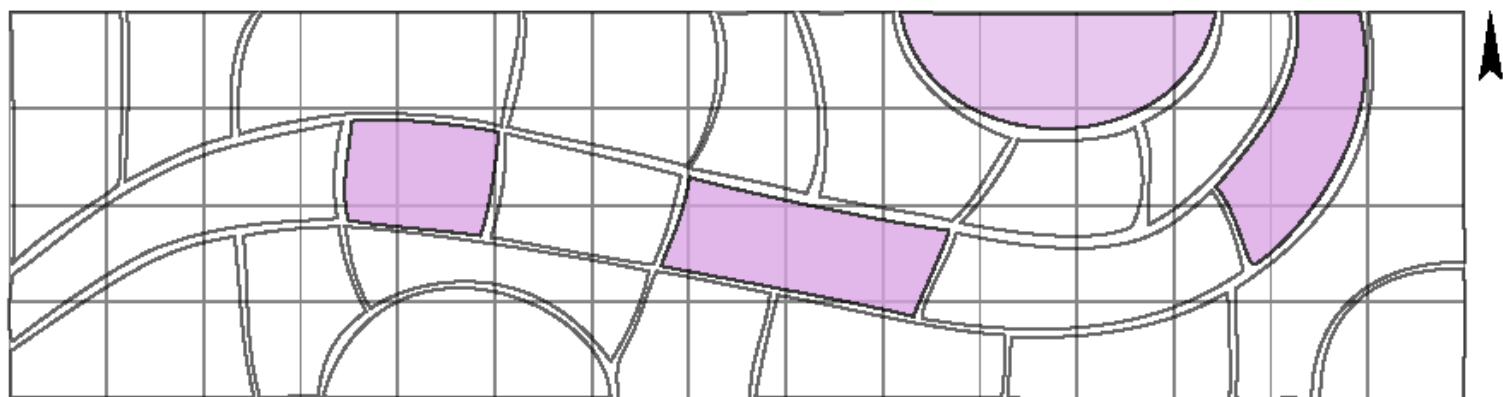
Sedum lydium

Osazovací plán



1. <i>Sedum acre</i>	5 -10cm	176x
2. <i>Sedum cauticola</i> 'Lidakense'	20cm	176x
3. <i>Sedum lydium</i>	20cm	197x
4. <i>Sempervivum</i>	5cm	272x
5. <i>Allium schoenoprasum</i>	40cm	104x

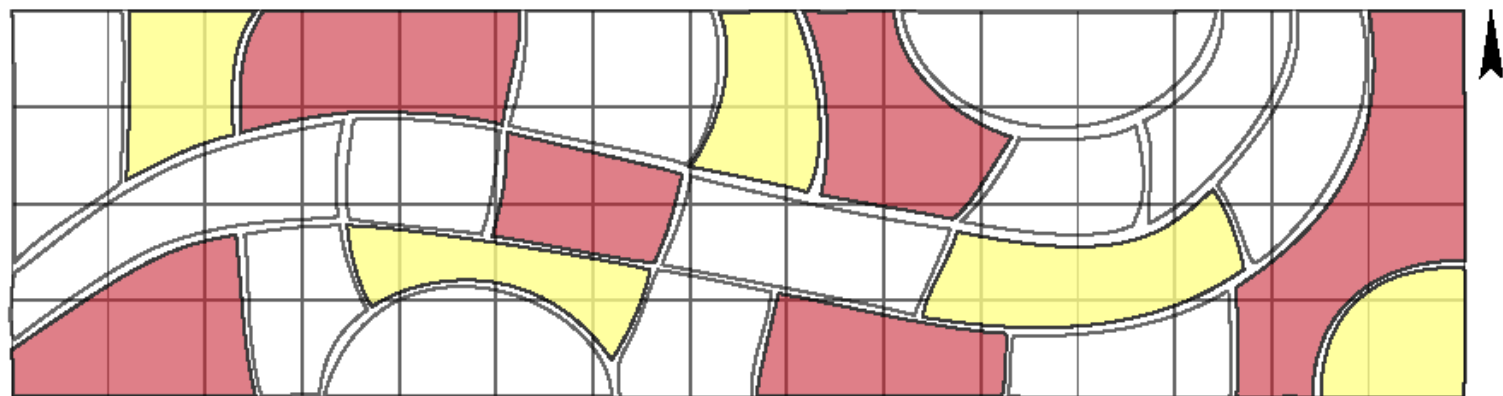
Trvalky (20 - 40 cm)



Trvalky (10 - 20 cm)



Trvalky (do 10 cm)



၁၉၅၅

၁၉၅၅

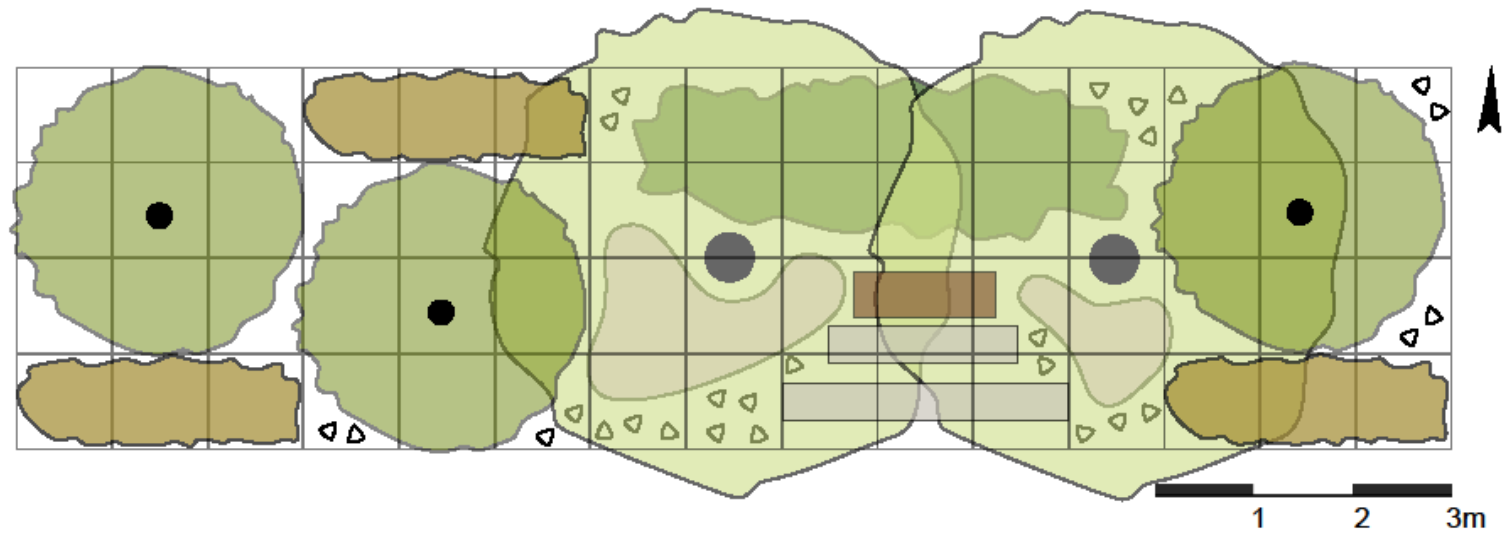
၁၉၅၅

၁၉၅၅

Záhon III.

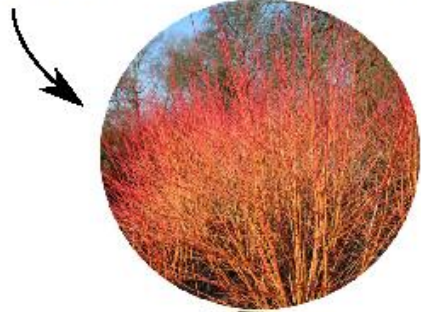
vegetační stupeň bramborářský

Princip

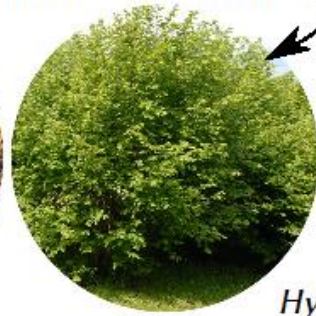


Sortiment

Cornus sanguinea 'Winter beauty'



Cornus stolonifera 'Flaviramea' *Corylus avellana*



Galanthus nivalis



Geranium nodosum



Hydrangea arborescens

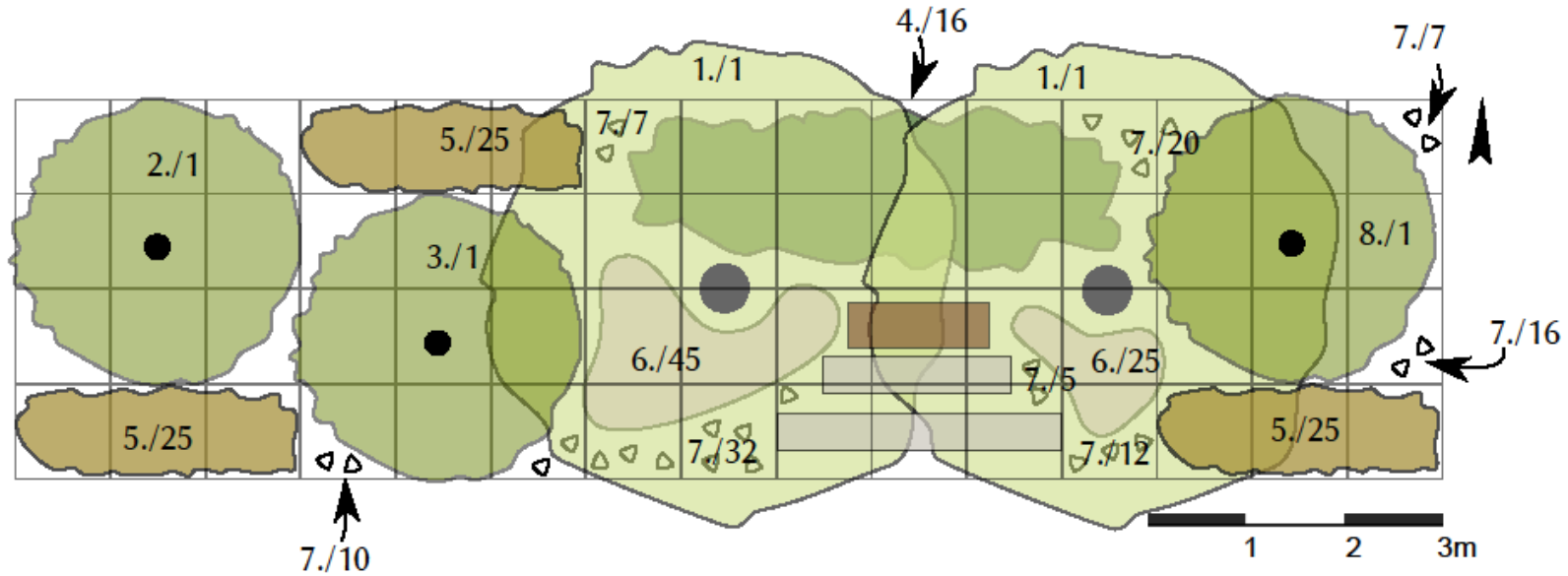


Phalaris arundinacea



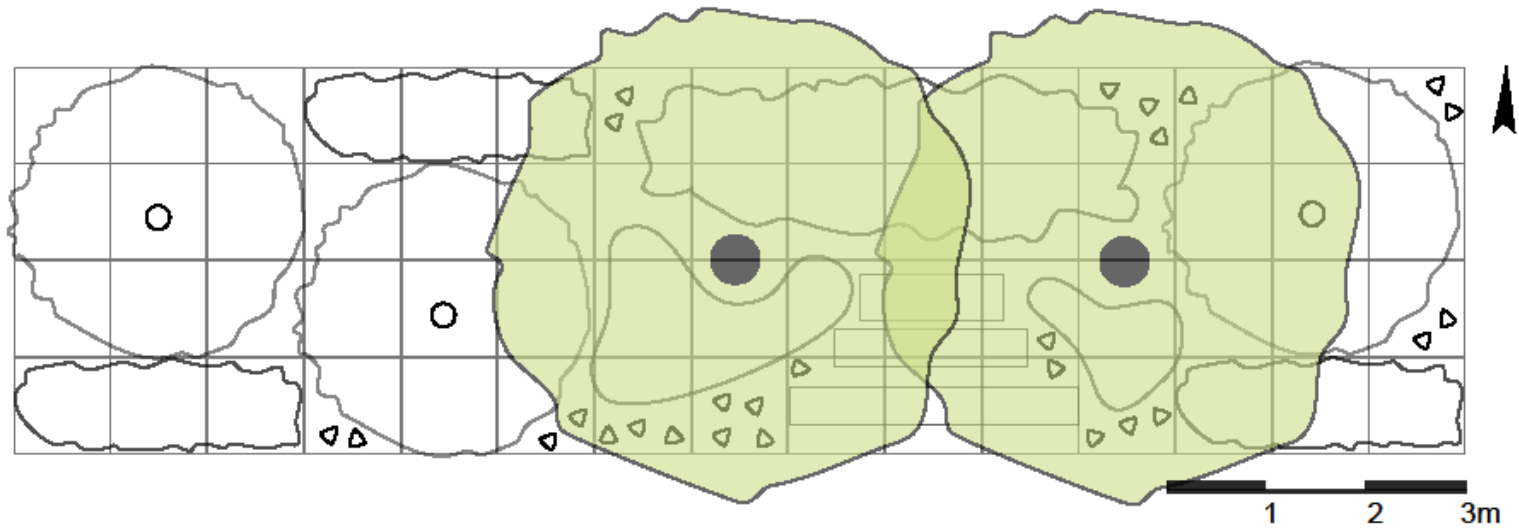
Betula pubescens

Osazovací plán



1. <i>Betula pubescens</i>	15 - 20m	1x
2. <i>Cornus stolonifera</i> 'Flaviramea'	1- 3m	1x
3. <i>Cornus sanguinea</i> 'Winter beauty'	1- 3m	1x
4. <i>Hydrangea arborescens</i>	1- 1,5m	16x
5. <i>Phalaris arundinacea</i>	0,75m	75x
6. <i>Geranium nodosum</i>	0,2 - 0,4m	70x
7. <i>Galanthus nivalis</i>	0,15m	109x
8. <i>Corylus avellana</i>	2- 6m	1x

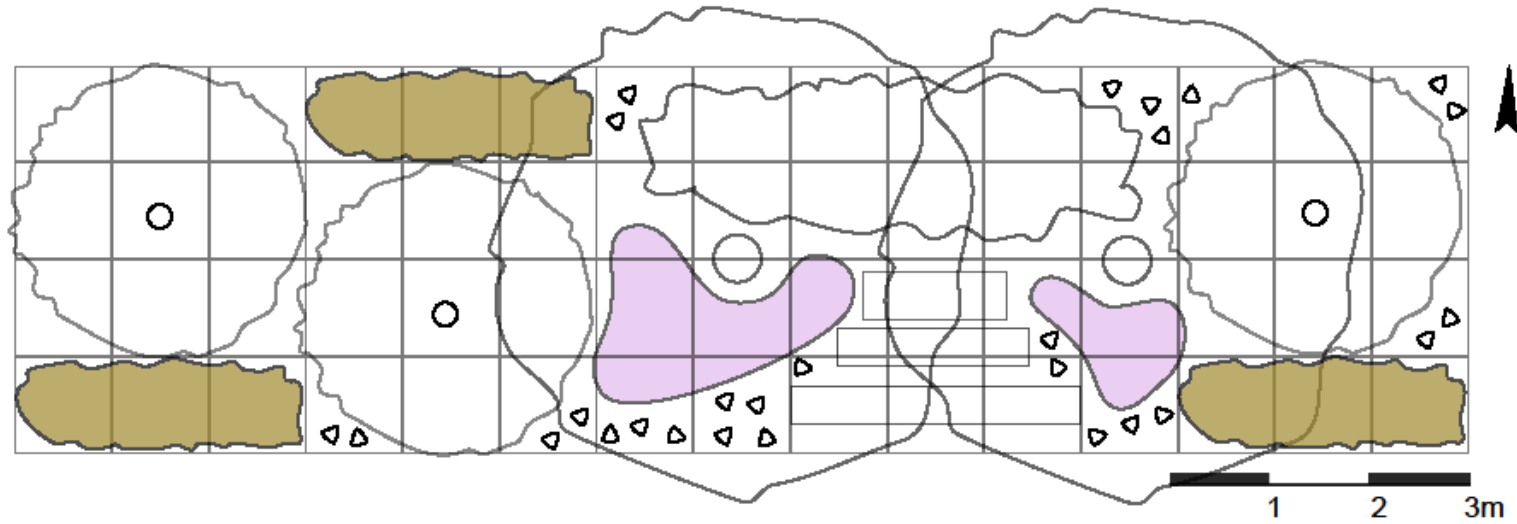
Stromy



Keře



Trvalky

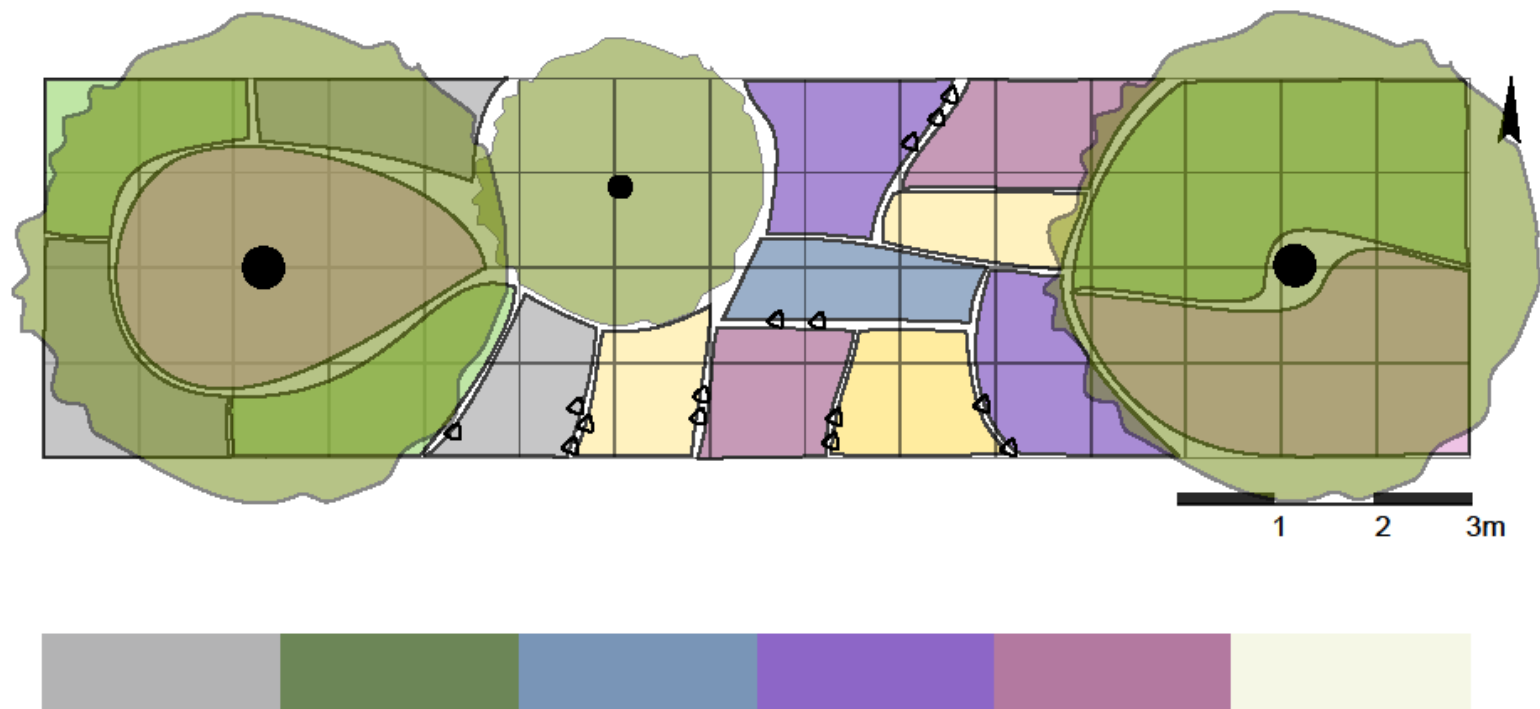




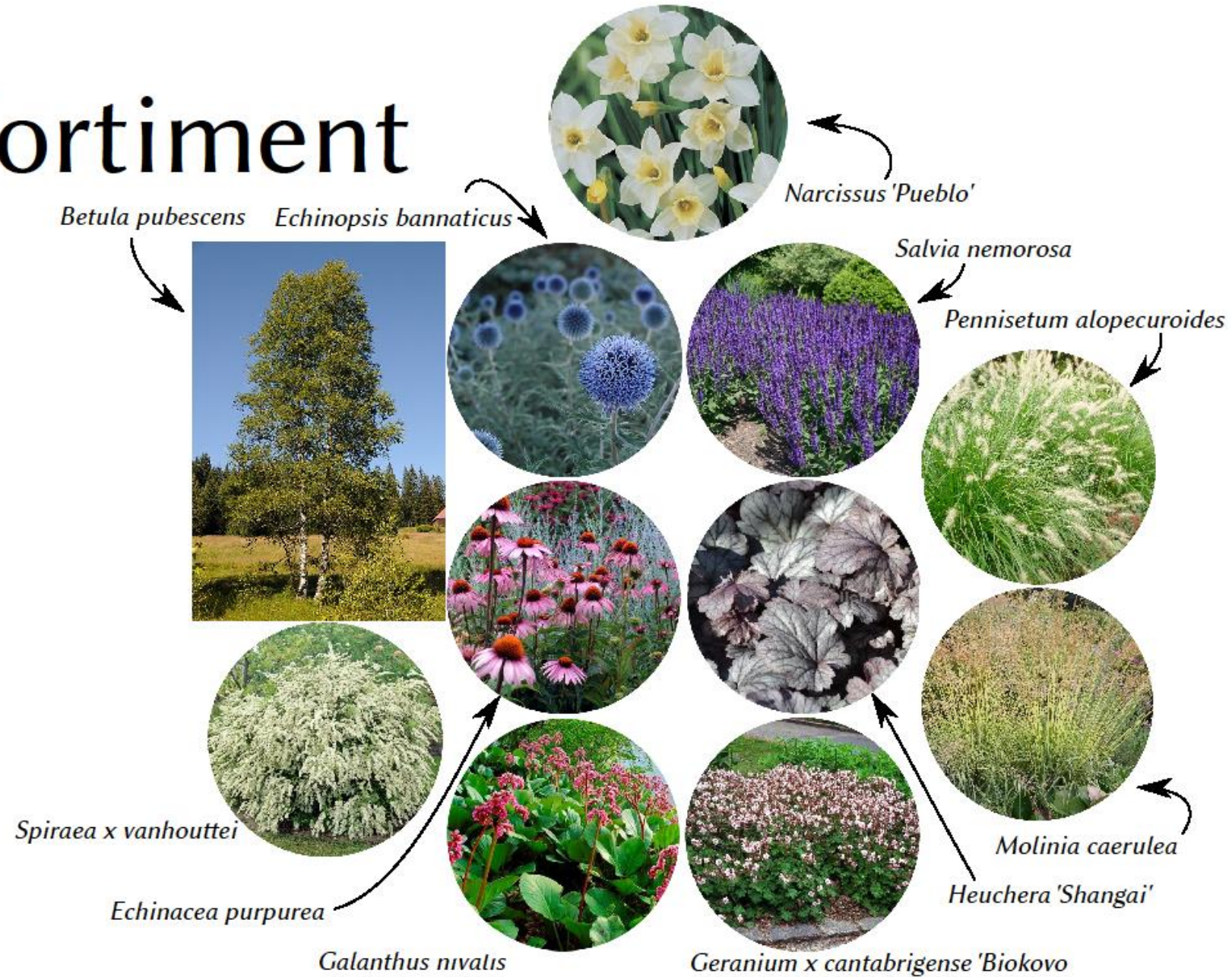
Záhon IV.

rychle rostoucí druhy

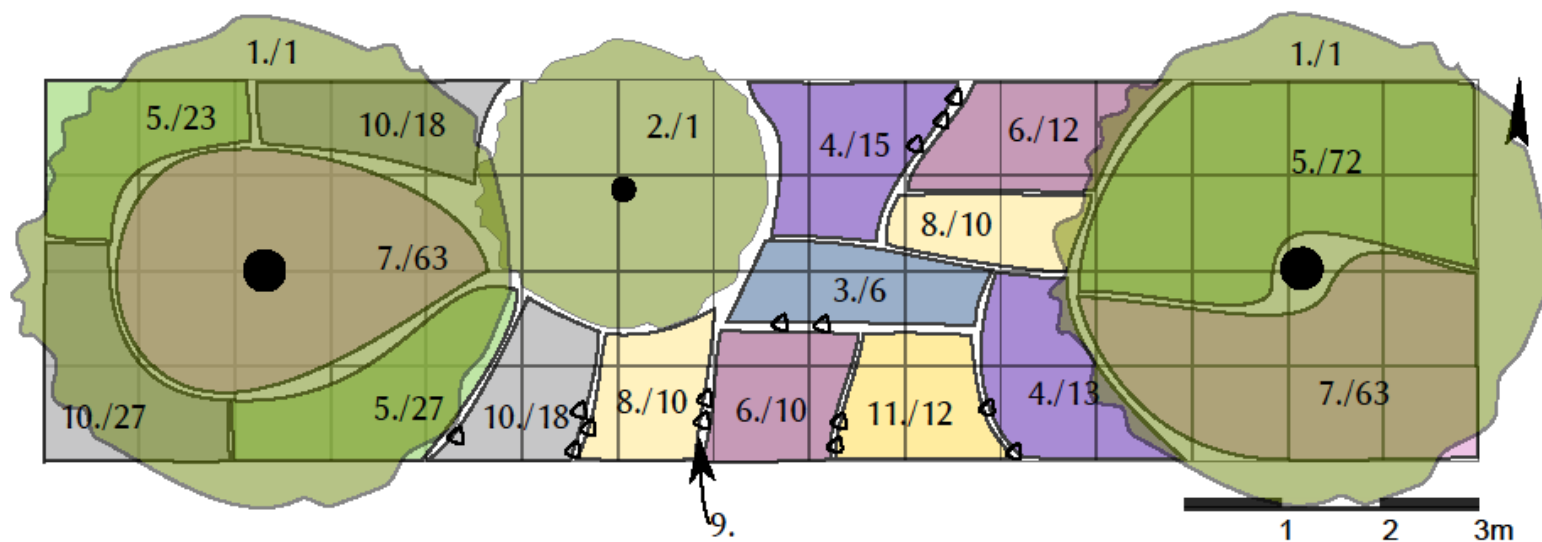
Princip



Sortiment

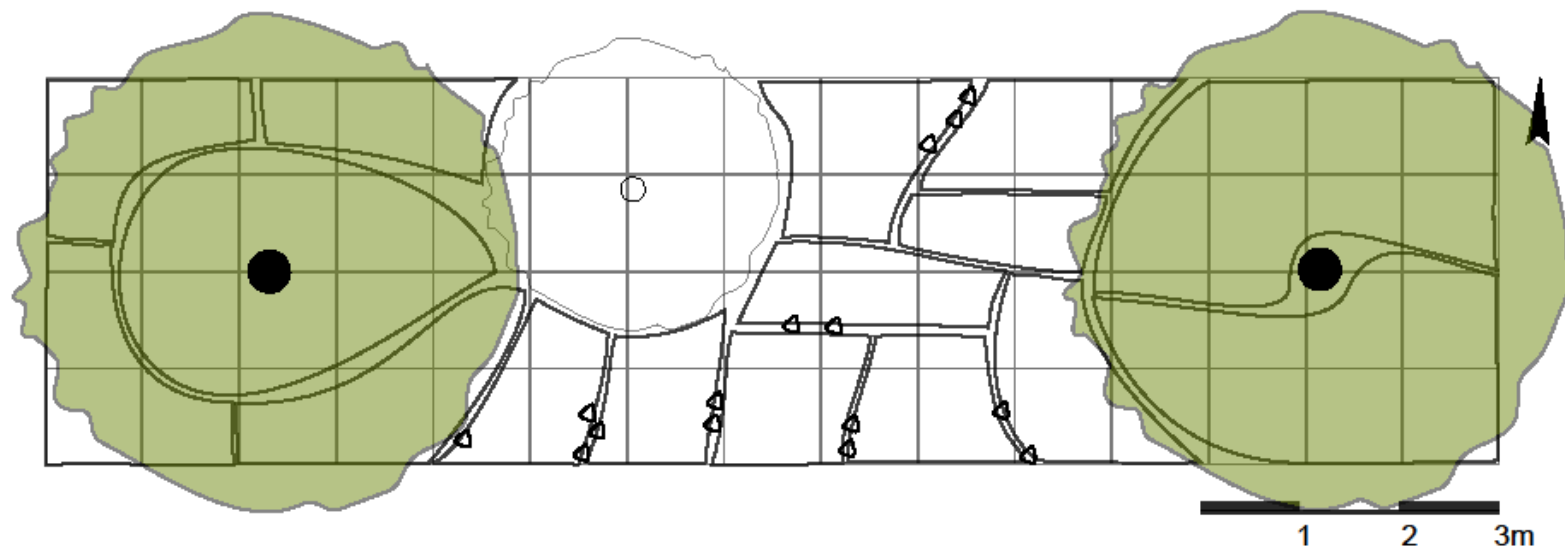


Osazovací plán

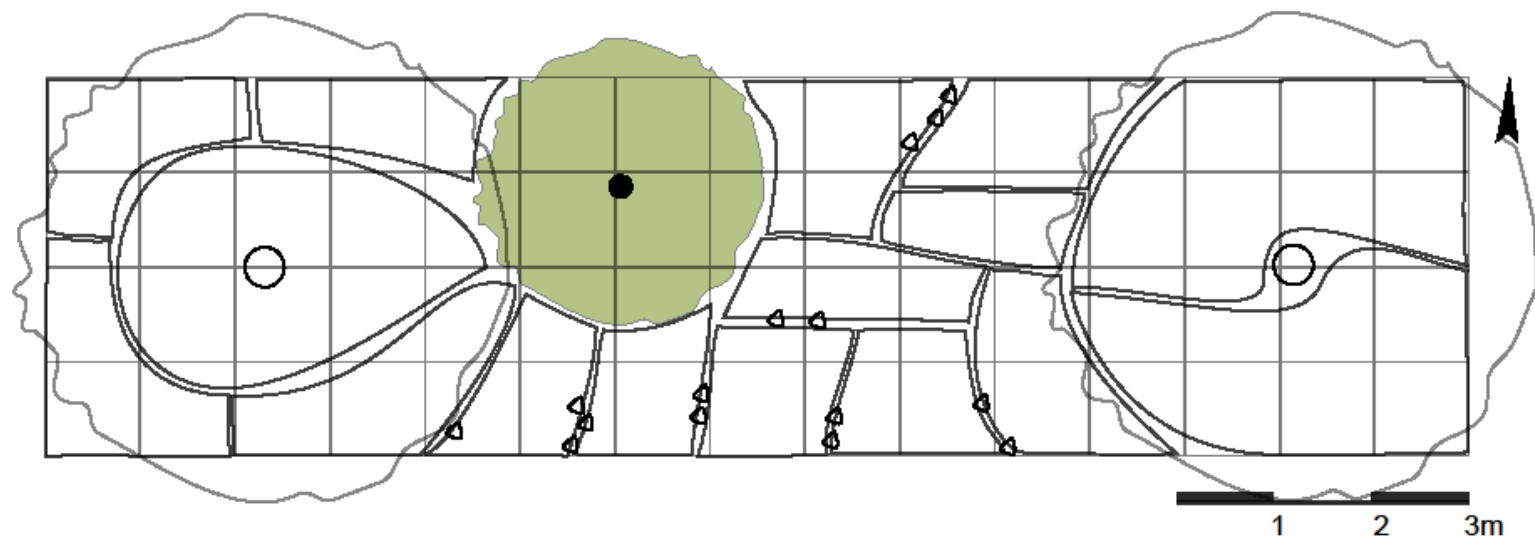


1. <i>Betula pubescens</i>	30m	2x	9. <i>Narcissus</i> 'Pueblo'	0,35m	32x
2. <i>Spiraea x vanhouttei</i>	1,5 - 2m	1x	10. <i>Heuchera</i> 'Shangai'	0,25m	63x
3. <i>Echinopsis bannaticus</i>	0,80- 1,2m	6x	11. <i>Pennisetum alopecuroides</i>	0,5 - 0,6m	12x
4. <i>Slavia nemorosa</i>	0,6m	28x			
5. <i>Bergenia cordifolia</i> 'Roblum'	0,4m	122x			
6. <i>Echinacea purpurea</i>	0,6 - 1m	22x			
7. <i>Geranium x cantabrigense</i> 'Biokovo'	0,2m	126x			
8. <i>Molinia caerulea</i>	0,6m	10x			

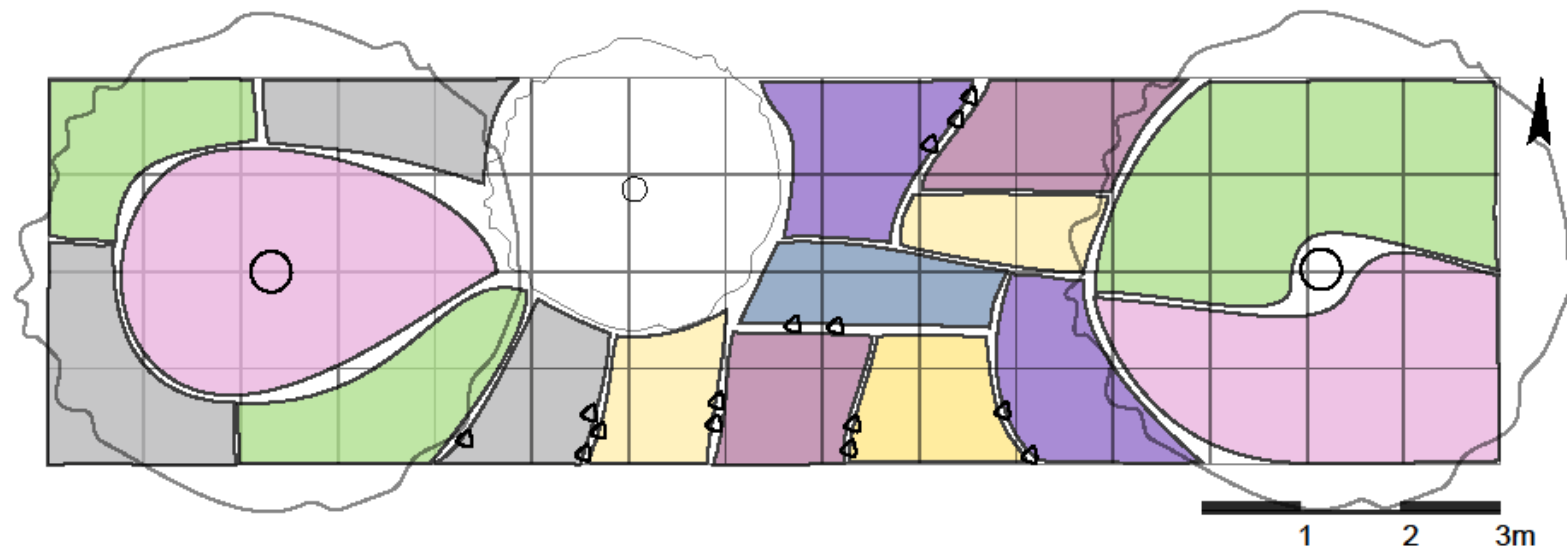
Stromy

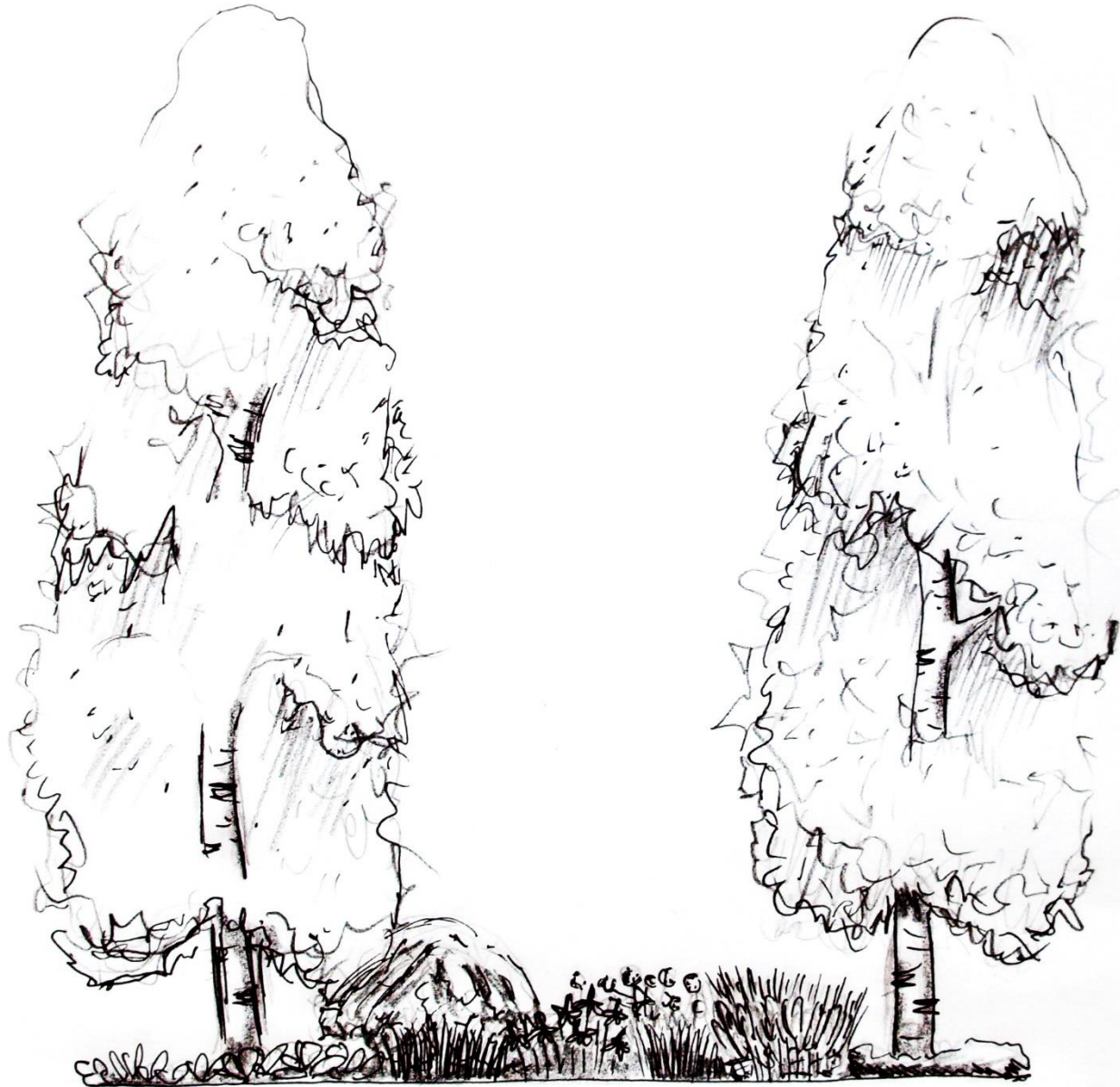


Keře



Trvalky

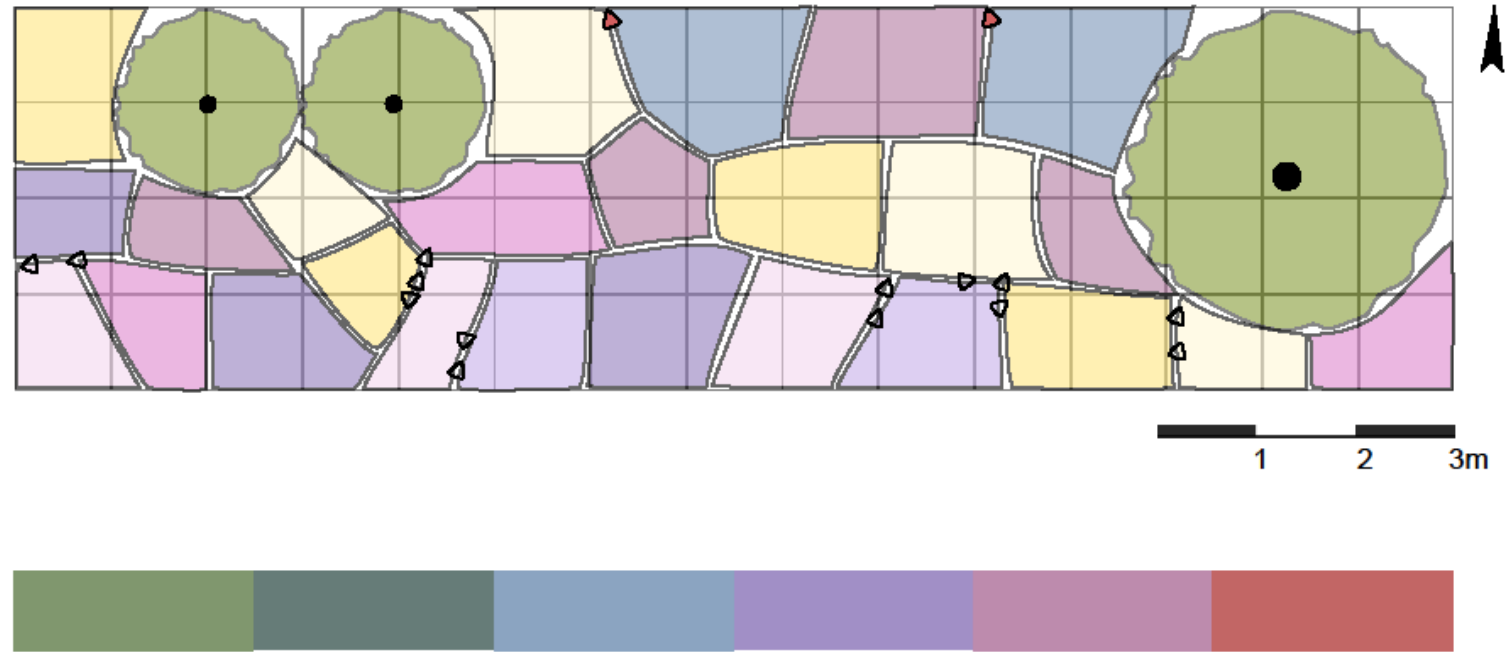




Záhon V.

sloupovité druhy

Princip



Sortiment

Chamaecyparissus lawsoniana



Echinopsis bannaticus



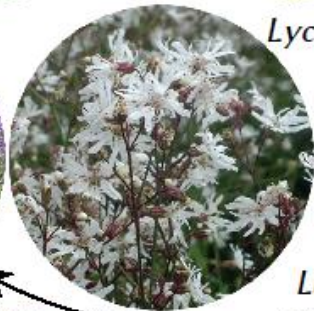
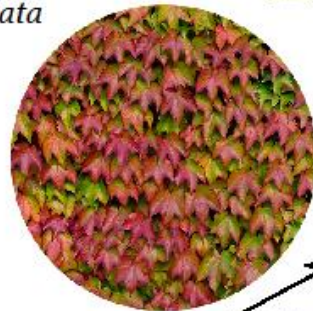
Salvia nemorosa



Stachys officinalis
'Hummelo'



Parthenocissus
tricuspidata



Lychnis flos-cuculi
'White Robin'

Lavandula angustifolia

Echinacea purpurea



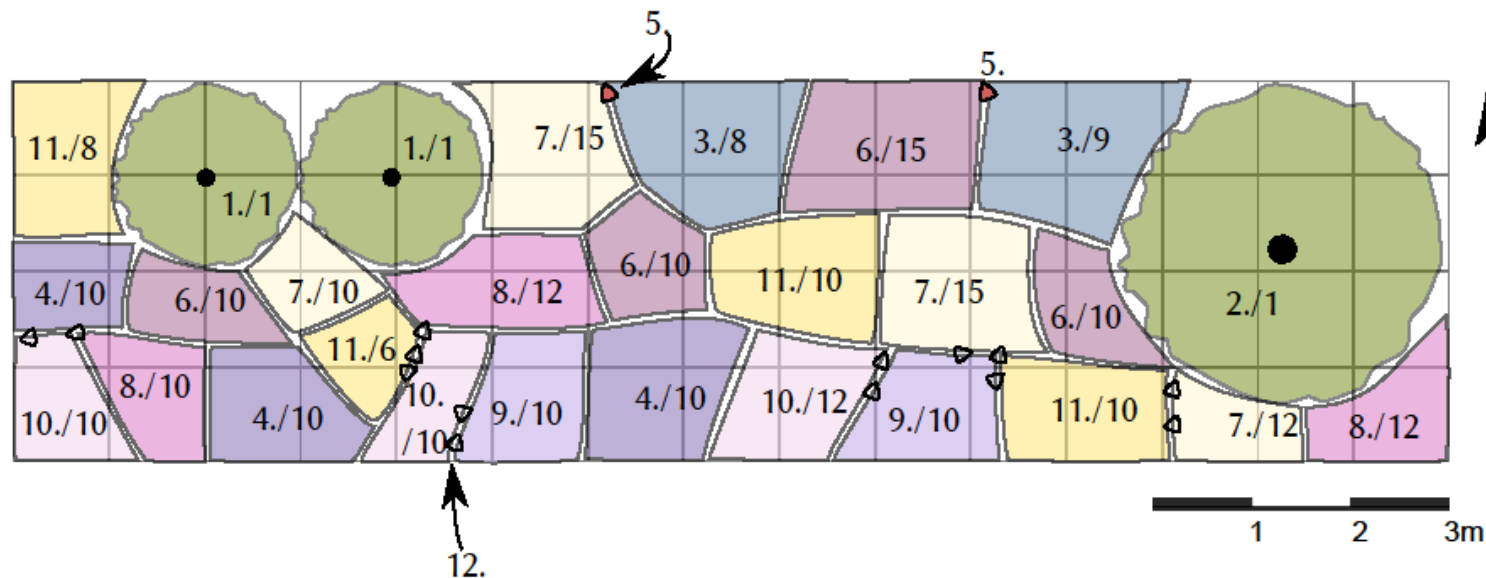
Galanthus nivalis

Pennisetum alopecuroides

Spiraea x vanhouttei

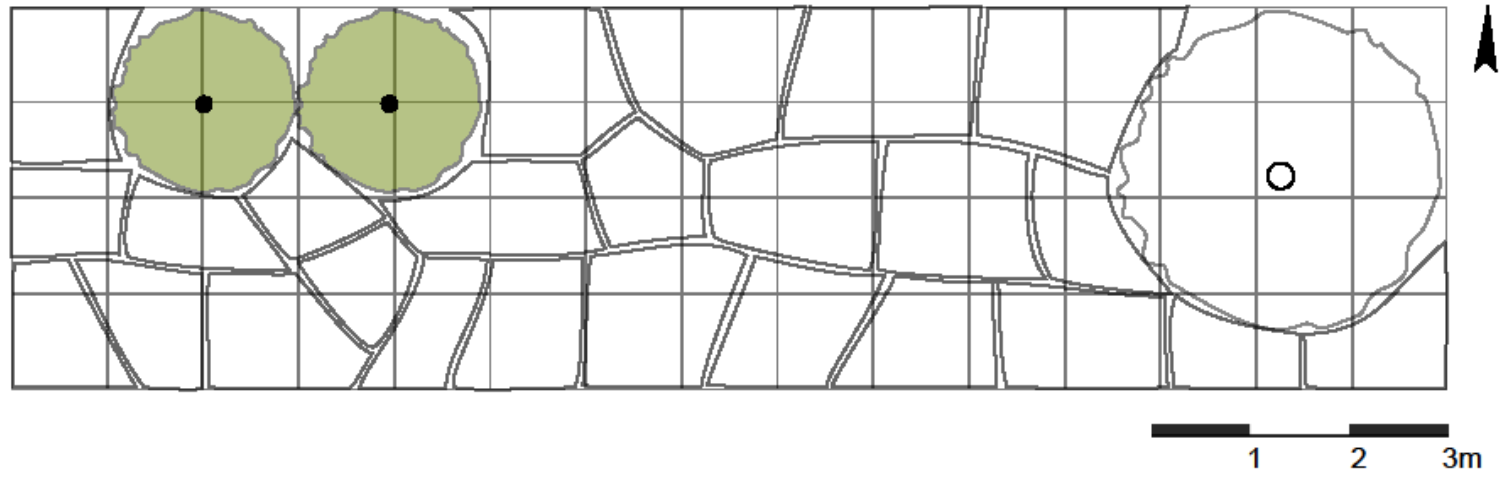
Echinacea purpurea
'White Swan'

Osazovací plán

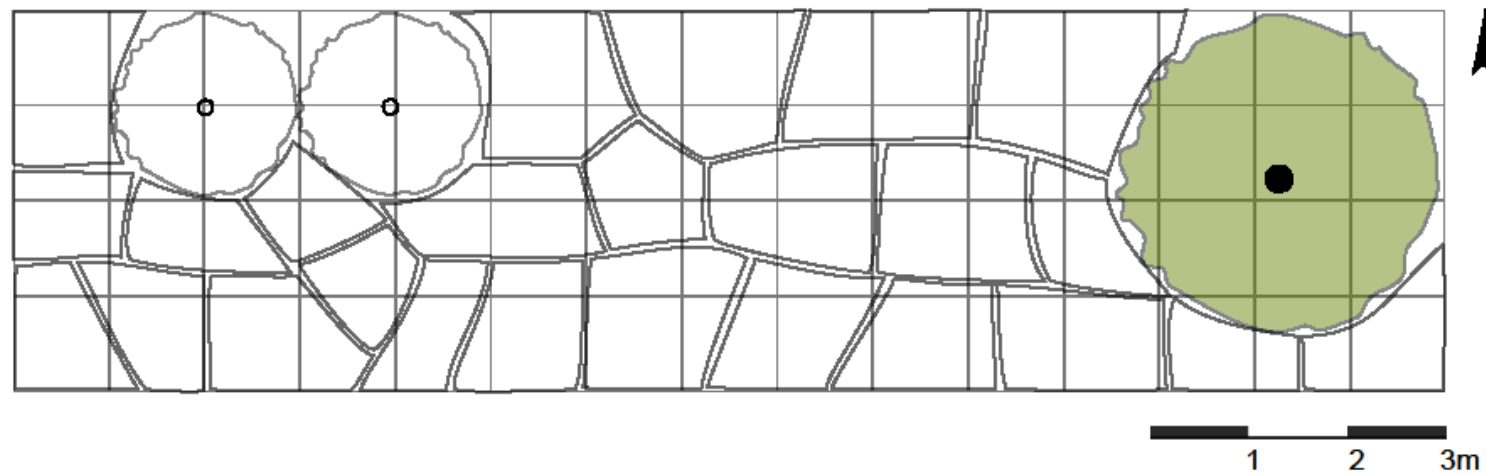


1. Chamaecyparissus lawsoniana	30m	2x	9. Lavandula angustifolia	0,3 - 0,5m	20x
2. Spiraea x vanhouttei	1,5 - 2m	1x	10. Lychnis flos-cuculi 'White robin'	0,4 - 0,5m	32x
3. Echinopsis bannaticus	0,80 - 1,2m	17x	11. Pennisetum alopecuroides	0,5 - 0,8m	34x
4. Slavia nemorosa	0,6m	30x	12. Galanthus nivalis	0,15m	42x
5. Parthenocissus tricuspidata		2x			
6. Echinacea purpurea	0,6 - 1m	45x			
7. Echinacea purpurea 'White Swan'	0,6 - 1m	52x			
8. Stachys officinalis 'Hummelo'	0,5 - 0,6m	34x			

Stromy



Keře



Trvalky



